

38°35'N

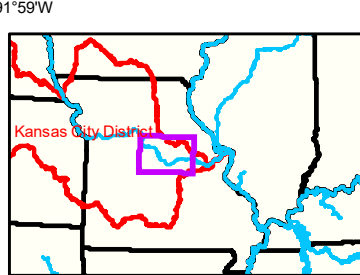
91°59'W

38°36'N

91°58'W

38°36'N

91°57'W



**LEGEND**

< 8	< 8 ft	Green Passing	Green	Green CAN
8 - 9	8 - 9 ft	Red Passing	Red	Red NUN
9 - 9.5	9 - 10 ft	Green Crossing	Junction	
9.5 - 10	10 - 12 ft	Red Crossing		
10 - 12	River Mile			
12 - 14	Sailing Line			
14 - 16	BSNP Structure			
> 16	Levee			

**Scale:** 0 312.5 625 937.5 1,250 2,500 Feet

**Compass Rose:** N, S, E, W

**NOTES:**  
 Horizontal Coordinate System:  
 World Geodetic System of 1984 (WGS84), projected to the Universal Transverse Mercator (UTM) Zone 15 North. Distance units in U.S. Survey Feet

Vertical Datum:  
 Soundings are shown in feet and indicated depths are referenced to water surface at time of collection.

The information depicted on this map represents the results of a survey conducted on the date indicated and can only be considered to represent the general condition existing at that time.

The location of navigation aids are based on and provided by the U.S. Coast Guard.

Notes

Jefferson City Gage = 6.7 at time of collection 05 October 2020

Gage\_L

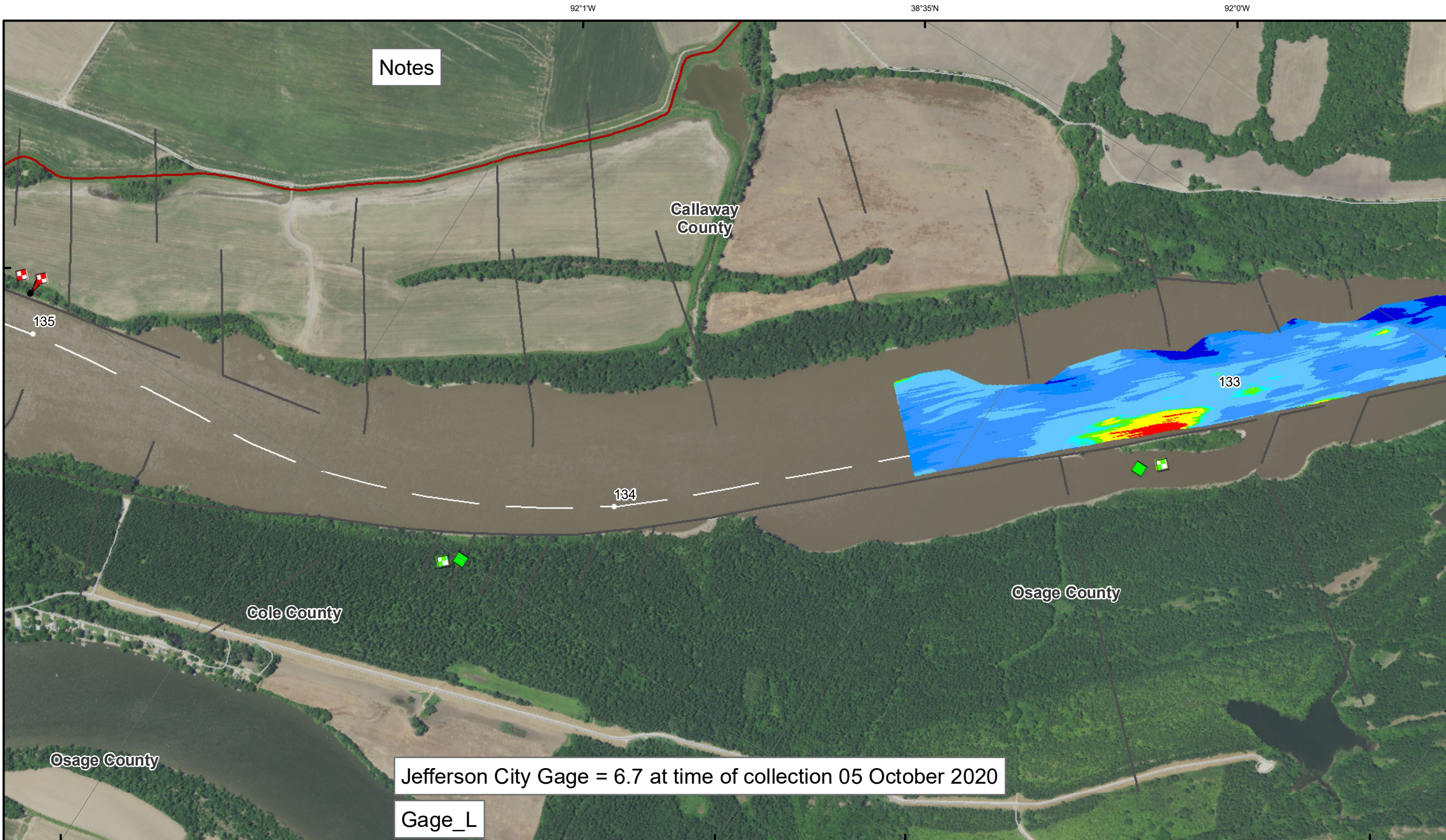


**DISCLAIMER:** The U.S. Army Corps of Engineers (USACE) provides this information as a service to the public. It is not intended to be used for any purpose other than that for which it was prepared. The USACE makes no warranty, express or implied, regarding the accuracy, reliability, or completeness of the information. The USACE is not responsible for any errors or omissions in this information. The USACE is not liable for any damages, including consequential damages, arising from the use of this information. The USACE is not responsible for any actions taken based on this information. The USACE is not responsible for any actions taken based on this information.

KANSAS CITY DISTRICT MISSOURI RIVER AREA OFFICE	
Submitted By:	MRAO
Reviewed By:	MRAO
Checked By:	MRAO

**Survey Information**  
 MO\_02\_LMR  
 MO\_02\_LMR\_20201005\_CS\_132\_0\_133\_5\_SORT  
 05 October 2020

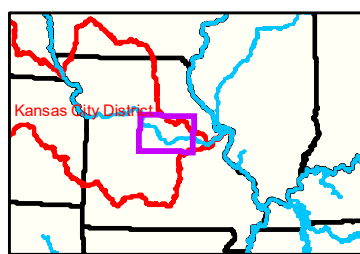
**Sheet Number**  
 15 of 46



Notes

Jefferson City Gage = 6.7 at time of collection 05 October 2020

Gage\_L



**LEGEND**

	< 8		< 8 ft		Green Passing		Green		Green CAN
	8 - 9		8 - 9 ft		Red Passing		Red		Red NUN
	9 - 9.5		9 - 10 ft		Green Crossing		Red Crossing		
	9.5 - 10		10 - 12 ft						
	10 - 12		River Mile						
	12 - 14		Sailing Line						
	14 - 16		BSNP Structure						
	> 16		Levee						

**Buoy**

0 312.5 625 937.5 1,250 2,500 Feet

**NOTES:**  
Horizontal Coordinate System: World Geodetic System of 1984 (WGS84), projected to the Universal Transverse Mercator (UTM) Zone 15 North. Distance units in U.S. Survey Feet.  
Vertical Datum: Soundings are shown in feet and indicated depths are referenced to water surface at time of collection.  
The information depicted on this map represents the results of a survey conducted on the date indicated and can only be considered to represent the general condition existing at that time.  
The location of navigation aids are based on and provided by the U.S. Coast Guard.



**DISCLAIMER:** The U.S. Army Corps of Engineers (USACE) provides this information for informational purposes only. It is not intended for use in any legal proceeding or as a basis for any action. The USACE makes no warranty, express or implied, regarding the accuracy, completeness, or reliability of the information provided. The USACE is not responsible for any errors or omissions in this information, or for any consequences arising from its use. The information is provided as is, without any guarantee of accuracy or reliability. The USACE is not liable for any damages, including any special, incidental, or consequential damages, arising from the use of this information. The information is provided for informational purposes only and should not be used as a basis for any action.

KANSAS CITY DISTRICT MISSOURI RIVER AREA OFFICE	
Submitted By:	MIRAO
Reviewed By:	MIRAO
Checked By:	MIRAO

**Survey Information**

MO\_02\_LMR  
MO\_02\_LMR\_20201005\_CS\_132\_0\_133\_5\_SORT  
05 October 2020

**Sheet Number**  
16 of 46